

Saab 93
Griffin





Simply the best

Now we are unleashing the Saab 9-3 Griffin. A uniquely designed and equipped model available in all four body styles. We are proud to say that this is the best Saab 9-3 ever.

The new Scandinavian design touches make this edition of the Saab 9-3 look crisper and even more powerful. Take the driver's seat and you'll find further proof of fresh attitude all around you. Start up, press on, enjoy the road and discover what the latest engine technologies mean. This car really does put some spice in your life.

The Griffin range.



Saab 9-3 SportCombi.
Innovative versatility combined with driving exhilaration. Starting at 320 Nm.



Saab 9-3X.
Saab driving excitement at a higher level. Available with the ground-breaking Saab XWD™.



Saab 9-3 Convertible.
A four-season, four-seater that opens up in 20 seconds.

Saab 9-3 Sport Sedan.
Designed around the driver. Starting at 119 g/km.



Five stars.
Top rating in the European New Car Assessment Program (Euro NCAP) crash tests. For more information, please visit www.euroncap.com.



Four-season, four-seater.

Saab 9-3 Convertible.

This is a Saab icon that spotlights progressive Scandinavian design. An open car for an open mind. A four-season four-seater that will empower your senses. Sporty, elegant and playful. You'll feel it in the dynamic driver's seat. In the turbo power, spirited performance and cutting-edge chassis design. Plus all the advanced features that enhance driving excitement and convenience even further. Did we mention world-class real-life safety? Prepare for it all – top up or top down.

The Aero Griffin.

The top-of-the-line Griffin model with dual sports exhaust pipes, sports chassis front foglights with titanium-effect trim, sports interior and matching equipment offers the most intense Saab driving experience.



Cockpit and soft-top.

The new Griffin interior is designed to add even more sporty attraction and driving pleasure. The top raises and latches in just 20 seconds. Available with remote operation. Excellent insulation from outside noise, heat and cold.



Turbo⁴/BioPower

220 hp/350 Nm
M6/A6
L/100 km, combined 7.4/8.6
CO₂, g/km, combined 173/199

Turbo⁴/BioPower

163 hp/320 Nm
M6/A6
L/100 km, combined 7.4/8.6
CO₂, g/km, combined 173/199

TTiD⁴

160 hp/360 Nm
180 hp/400 Nm
M6/A6
L/100 km, combined 5.2/6.2
CO₂, g/km, combined 137/162



Bolder, brighter and very eager.

Saab 9-3 Sport Sedan and SportCombi.

Just one look and you'll know it. The Saab 9-3 is designed for driving exhilaration beyond the ordinary. Boosted by the powerful sensation that comes from a range of new, highly efficient turbo engines. The driver focus strikes you the very second you slide into the cockpit and discover all the ways it's designed to perform. So if you really want to enjoy true driving exhilaration, welcome to try the Saab 9-3 Griffin.



The Aero Griffin.

The top-of-the-line Griffin model with dual sports exhaust pipes, sports chassis front foglights with titanium-effect trim, sports interior and matching equipment offers the most intense Saab driving experience.



Saab XWD.

Our optional cross-wheel drive is one of the most advanced systems available. Provides better grip, faster acceleration, more agile cornering and improved stability. In all kinds of weather.

eLSD.

On cars with XWD™ the optional electronically controlled rear limited slip differential balances torque between the rear wheels, allowing the car to turn even quicker and more easily.



Saab 9-3 Sport Sedan

Turbo⁴/BioPower

220 hp/350 Nm
M6/A6 (XWD M6/A6)
L/100 km, combined 6.7/7.9 (8.3/8.9)
CO₂, g/km, combined 155/185 (194/206)

Turbo⁴/BioPower

163 hp/320 Nm
M6/A6 (XWD M6)
L/100 km, combined 6.7/7.9 (8.3)
CO₂, g/km, combined 155/185 (194)

TTiD⁴

130 hp/320 Nm
160 hp/360 Nm
180 hp/400 Nm
M6*/M6/A6**
L/100 km, combined 4.5/4.9/5.8
CO₂, g/km, combined 119/129/153

Saab 9-3 SportCombi

Turbo⁴/BioPower

220 hp/350 Nm
M6/A6 (XWD M6/A6)
L/100 km, combined 6.8/8.2 (8.4/9.0)
CO₂, g/km, combined 159/190 (195/209)

Turbo⁴/BioPower

163 hp/320 Nm
M6/A6 (XWD M6)
L/100 km, combined 6.8/8.2 (8.4)
CO₂, g/km, combined 159/190 (195)

TTiD⁴

130 hp/320 Nm
160 hp/360 Nm
180 hp/400 Nm
M6*/M6/A6**
L/100 km, combined 4.5/5.1/6.0
CO₂, g/km, combined 119/135/159

* Low emission version.
** Not available with 130hp engine.



Starting at
119 g/km

TTiD⁴ – Two-stage turbodiesels.

Try the Saab 9-3 Griffin with one of our innovative two-stage turbodiesel engines and you won't have to compromise between high performance and low emissions. Available in three versions – 130hp, 160hp or 180hp.

Up to
180 hp

Petrol and BioPower engines.

The Saab 9-3 is available with a range of new petrol and BioPower (E85) engines featuring direct injection, dual variable valve timing and twin-scroll turbo. The result? Refined and smooth yet with stronger power when you really need it.

Designed to elevate your experience.

Saab 9-3X.

The Saab 9-3X Griffin is designed around you – an active driver with an active life. A sporty wagon with a rugged exterior and elevated all-season performance, available with the optional Saab XWD™ cross-wheel drive system. If you like a commanding view, the new Saab 9-3X is the perfect place to be. With its raised chassis you are seated a bit higher in the driver-focused cockpit. With instant turbocharged power at hand and a sensational feeling of control. No matter the weather and road conditions.



New turbo engines.

The Saab 9-3X features a range of new turbocharged, direct injected petrol and BioPower (E85) engines that provide increased efficiency, refinement and torque.

Two-stage turbodiesel.

The Saab 9-3X is available as a special lower-emission model with our innovative two-stage turbodiesel engine combined with front-wheel drive (FWD).



Saab XWD.

The Saab XWD™ cross-wheel drive system continuously senses your driving style and the road conditions. It then actively helps improve the car's behaviour on the road. What you feel is better grip, faster acceleration, more agile cornering and improved stability. In all kinds of weather.

eLSD.

On cars with XWD™ the optional electronically controlled rear limited slip differential balances torque between the rear wheels, allowing the car to turn even quicker and more easily.



Turbo⁴/BioPower

220 hp/350 Nm
XWD M6/A6
L/100 km, combined 8.4/9.0
CO₂, g/km, combined 195/209

Turbo⁴/BioPower

163 hp/320 Nm
XWD M6
L/100 km, combined 8.4
CO₂, g/km, combined 195

TTiD⁴

180 hp/400 Nm
FWD M6/A6
L/100 km, combined 5.1/6.0
CO₂, g/km, combined 135/159



Prepared for anything.

With Saab Genuine Accessories you can adapt your Saab 9-3 to suit your taste. You can also enhance its functionality and convenience even further – at work, with family or at your favourite activity.

Wind deflector.

For the Convertible. Reduces back-draught and enhances comfort when driving with the top down.



Roof rack.

For the roof rails. Available in black or as C-track profile in aluminium.

Interior and cargo mats.

Textile or rubber. Protect the carpeting from dirt, water and wear.



Alloy wheels.

Choose from a wide range of alloy wheels available from Saab Genuine Accessories. Read more at saab.com.



Bike holder with lift.

Insert the bike at door height and lift with the help of gas-filled struts. Lockable.

Surfboard holder.

Features resilient rubber strips. Equipped with a mast holder.

Towbars.

Choose between fixed and removable/lockable towbars.

Cargo management.

A wide range of nets, guards and holders for convenient cargo management available from Saab Genuine Accessories.

Extending ski/board holder.

Slides out from the car roof for easy loading and unloading. Holds six pairs of skis or four snowboards.



Interior colours and upholstery.



L43 Leatherette/textile seats, Parchment
Saab 9-3 Griffin Sport Sedan/SportCombi.



B53 Leather/textile sport seats, Black
Saab 9-3X.



B63 Leather sport seats, Black.
Saab 9-3 Sport Sedan/SportCombi/Saab 9-3X, Optional.



L64 Leather/Thila textile sport seats, Parchment
Saab 9-3 Aero Griffin Sport Sedan/SportCombi.



L52 Premium natural leather sport seats, Parchment
Saab 9-3 Convertible, Optional.



B65 Leather accent sport seats, Black
Saab 9-3 Convertible, Optional.

Leather upholstery refers to leather seating surfaces. Premium natural leather sport is an all-leather seat upholstery in semi-aniline hide that also includes the door inserts. Sport seats have pronounced extra side and thigh support.

Fresh interior.

With new materials, textures and colour combinations. The Griffin interior is designed to add even more sporty attraction and driving pleasure. Pictured here is the Aero Griffin. See all the possibilities and design your car at saab.com.



Wheels.



3-spoke Twin 19×8" (ALU 85)
(XWD only)



10-spoke Turbine 18×7½" (ALU 90)



V-spoke 18×7½" (ALU 73)



5-spoke 17×7" (ALU 88)



5-spoke 17×7½" (ALU 81)



5-spoke Twin 17×7" (ALU 50)



5-spoke Aktiv 17×7" (ALU 82)
(9-3X only)



V-spoke 17×7" (ALU 79)
(XWD only)



3-spoke 16×6½" (ALU 86)



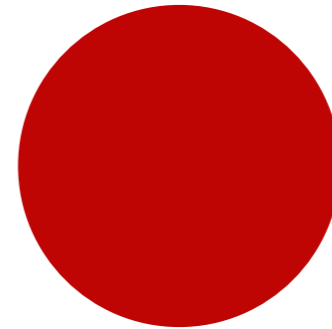
5-spoke Double Bridge 16×6½" (ALU 87)

Please see Owner's manual
for details and consult your
local dealer for latest
information about wheels.

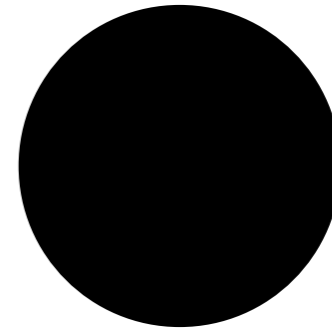
Exterior colours.



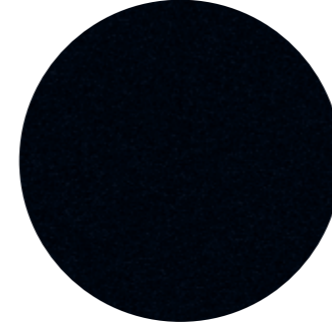
Arctic White solid



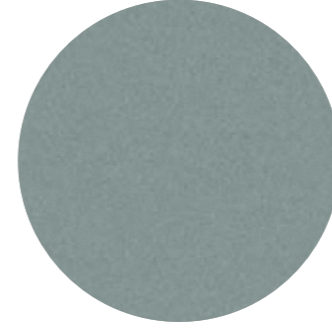
Laser Red solid



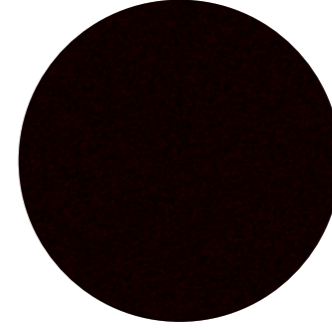
Black solid (not 9-3X)



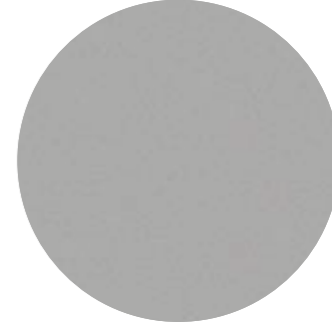
Jet Black metallic



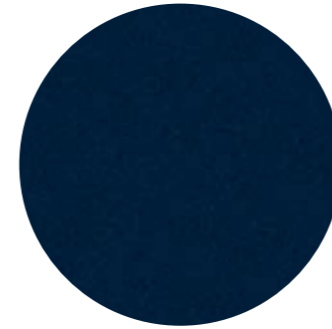
Glacier Silver metallic



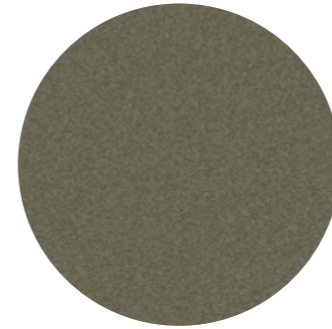
Java Brown metallic (not 9-3X)



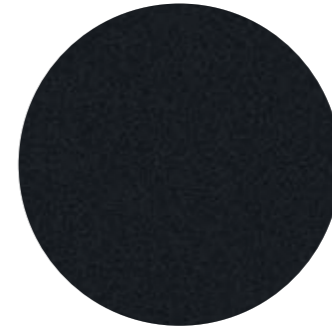
Diamond Silver metallic



Nocturne Blue metallic (not 9-3X)



Oak Brown metallic



Carbon Grey metallic

Due to limitations in the
printing process, the colours
shown may differ slightly from
the actual paint colour.

SAAB

saab.com

Int. Eng. Art. No. **32015621** Printed in Sweden. Copyright Saab Automobile AB, Trollhättan, Sweden, 2011. This brochure is printed on chlorine-free, recyclable paper. Particulars and illustrations in this brochure are based on the information that was valid at the time of final editing (February 2011). The model range, technical specifications, services and equipment may vary from one market to another and may be altered without prior notice. Pictures may show cars fitted with optional extra equipment.

Please consult your Saab dealer for the latest information.

Saab AB and Saab Automobile AB are today two unaffiliated companies with a common history. Saab Automobile AB manufactures cars. Saab AB has its main operations in defence, aviation, space technology and civil security. For more information about Saab AB, please visit www.saabgroup.com.